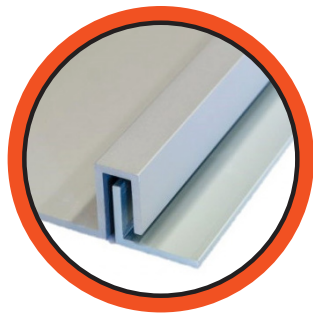


SECURITY BEGINS AT THE DOOR

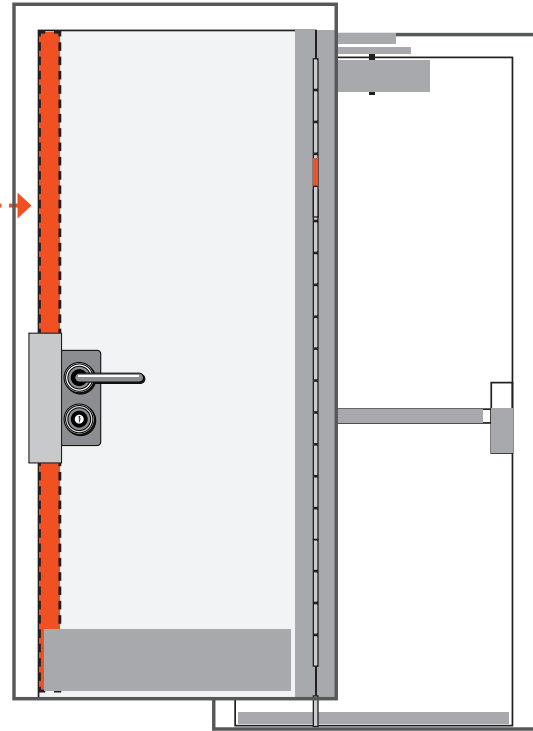
AT-THE-DOOR PROTECTION FROM POP-A-LOCK

As one of the nation's largest and most trusted local locksmiths, we take great pride in providing at-the-door security services - including the installation and maintenance of **COMMERCIAL DOOR INTERLOCKERS**.



Interlockers

The Interlocker is the simplest method to secure your property from forced access. Designed for both out-swing and in-swing doors, latch protectors are offered in both aluminum and steel, and can be customized to fit any size door.



Sometimes, two are better than one. A door interlocker, also known as an overlapping astragal, is a two-piece set of hardware that solves multiple security challenges – helping to ensure single, double, and Dutch doors are kept accessible, safe, and secure.

Pop-A-Lock's trained professionals provide the following:

- Proper installation based on use and door style
- Adherence to Life safety and building code requirements
- Annual repair and maintenance to ensure closer is in working order

FOR IMMEDIATE ASSISTANCE, to schedule an appointment, or to learn more about our wholesale pricing, call or visit our website below.



popalocknj.com | 973.557.4996

For the Key Moments in Your Life.

INTERLOCKER CONSIDERATIONS

TO ENSURE THEY PERFORM AS INTENDED

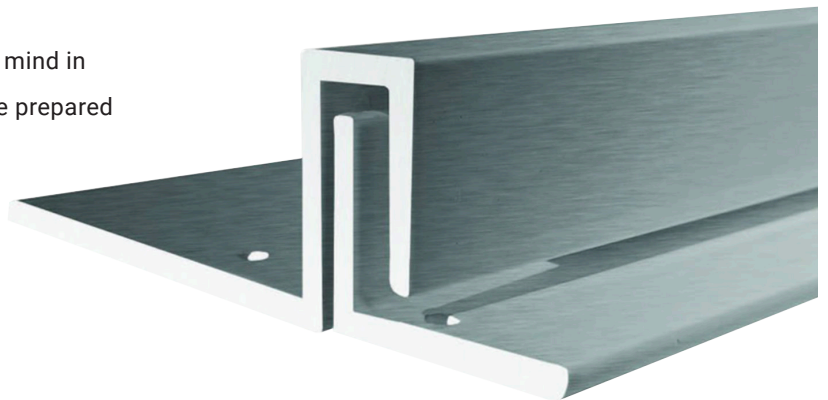
Connected by bolts and rivets, door interlockers are plates that run the height of the door, reinforcing security, blocking light and sound transmissions, protecting against weather conditions, and slowing the spread of fire, smoke, and gases in an emergency.

COMPONENTS OF DOOR INTERLOCKERS

- **L-Shaped Piece:** The L-shaped piece of a door interlocker is mounted onto the door jam, plumb to the door. It's the first line of defense of the door interlocker and provides a foundation to protect against forced access.
- **C-Shaped Piece:** The C-shaped piece of a door interlocker fits over L-shaped piece, forming a pry-proof cover over the height of the door.

ADVANTAGES OF DOOR INTERLOCKERS:

- **Metal-powered protection:** Door interlockers are made of heavy metals like aluminum and steel that are sturdy and durable – ideal for high-traffic areas and preventing potential stress in residential or commercial spaces.
- **Cut-to-fit solutions:** Door interlockers can be trimmed to fit around various kinds of doors in various widths as needed.
- **Damage control:** Door interlockers provide peace of mind in noisy settings, like schools and auditoriums, and are prepared to secure the spread of fire when disaster strikes.



popalocknj.com | 973.557.4996

For the Key Moments in Your Life.